



JTECH[®]
TOOL



1

- Cr-V
- 5.5 8 10 12 13 14 17 19

A??	K????	? e?? ? ??
COM-S8A	2x12=24	25,00

3

- Cr-V
- 5.5 8 9 10 11 12 13 14 17 19 22



A??	K????	e
COM-S11	2x12=24	36,00

4

- Cr-V



A??	K????	? e?? ? ??
AWS - 6	150	10 6=60 9,30
AWS - 8	200	10 6=60 12,00
AWS - 10	250	10 6=60 14,00
AWS - 12	300	10 4=40 19,00



6

- Cr-V

A??	K????	e
COM-6	6 106	12x10=120 1,84
COM-7	7 116	12x10=120 1,88
COM-8	8 127	12x10=120 1,98
COM-9	9 136	12x10=120 2,17
COM-10	10 146	12x10=120 2,45
COM-11	11 157	12x10=120 2,50
COM-12	12 167	12x10=120 2,55
COM-13	13 176	12x10=120 2,92
COM-14	14 186	12x10=120 3,20
COM-15	15 196	12x10=120 3,49
COM-16	16 206	12x10=120 3,63
COM-17	17 217	12x10=120 4,38
COM-18	18 226	12x10=120 4,62
COM-19	19 236	12x10=120 4,90
COM-20	20 246	6x10=60 5,79
COM-21	21 256	6x10=60 6,45
COM-22	22 268	6x10=60 6,59
COM-23	23 279	6x10=60 7,16
COM-24	24 287	6x6=36 7,49
COM-25	25 297	6x6=36 7,96
COM-26	26 307	6x6=36 8,48
COM-27	27 317	6x6=36 9,80
COM-28	28 327	6x6=36 10,50
COM-29	29 336	6x6=36 11,02
COM-30	30 347	6x6=36 11,87
COM-32	32 366	6x6=36 12,86



2

- Cr-V

A??	K????	? e?? ? ??
OWS5.5-7	5.5x7 128	12x10=120 1,88
OWS8-10	8x10 147	12x10=120 2,07
OWS10-12	10x12 156	12x10=120 2,45
OWS11-13	11x13 172	12x10=120 2,64
OWS13-15	13x15 190	12x10=120 2,97
OWS17-19	17x19 222	12x10=120 4,57
OWS18-21	18x21 237	6x10=60 5,79
OWS19-21	19x21 238	6x10=60 5,98
OWS19-22	19x22 237	6x10=60 5,98
OWS22-24	22x24 247	6x10=60 6,69
OWS23-26	23x26 255	6x10=60 7,80
OWS24-27	24x27 255	6x10=60 8,38
OWS27-30	27x30 282	6x6=36 9,84
OWS30-32	30x32 298	6x6=36 11,02



5

- Cr-V

A??N°	K????	e
OFS-5.5x7	5.5x7 168	12x10=120 2,26
OFS-8-10	8x10 175	12x10=120 2,45
OFS-10-12	10x12 200	12x10=120 2,95
OFS-11-13	11x13 209	12x10=120 3,58
OFS-12-14	12x14 209	12x10=120 3,63
OFS-14-17	14x17 238	12x10=120 4,69
OFS-17-19	17x19 272	6x10=60 6,88
OFS-18-21	18x21 293	6x10=60 7,50
OFS-19-22	19x22 293	6x10=60 7,70
OFS-21-23	21x23 334	6x10=60 8,60
OFS-22-24	22x24 330	6x10=60 8,90
OFS-24-27	24x27 377	6x6=36 11,90
OFS-30-32	30x32 400	6x6=36 14,90

7

- Cr-V

A??N°	K????	e
SK1/2-10	10 mm 39 mm	10x12=120 1,34
SK1/2-11	11 mm 39 mm	10x12=120 1,37
SK1/2-12	12 mm 39 mm	10x12=120 1,39
SK1/2-13	13 mm 39 mm	10x12=120 1,41
SK1/2-14	14 mm 39 mm	10x12=120 1,42
SK1/2-15	15 mm 39 mm	10x12=120 1,48
SK1/2-16	16 mm 39 mm	10x12=120 1,48
SK1/2-17	17 mm 39 mm	10x12=120 1,60
SK1/2-18	18 mm 39 mm	10x12=120 1,79
SK1/2-19	19 mm 39 mm	10x12=120 1,79
SK1/2-20	20 mm 39 mm	10x12=120 1,90
SK1/2-21	21 mm 39 mm	10x12=120 1,90
SK1/2-22	22 mm 39 mm	10x12=120 2,28
SK1/2-23	23 mm 39 mm	10x12=120 2,69
SK1/2-24	24 mm 39 mm	10x12=120 2,69
SK1/2-26	26 mm 39 mm	10x12=120 3,00
SK1/2-27	27 mm 39 mm	10x12=120 3,00
SK1/2-28	28 mm 39 mm	10x12=120 3,50
SK1/2-30	30 mm 42 mm	6x10=60 4,90
SK1/2-32	32 mm 42 mm	6x10=60 5,25

1/2"





1 . **1/2" , 15**

- Cr-V
- 10 11 12 13 14 15
- 16 17 18 19 22 24

A??.	K????	e
SK1/2-15SP	1x6	57,00



2 . **1/2" , 27**

- Cr-V
- 8 9 10 11 12 13 14 15 16
- 17 18 19 20 21 22 23 24 25
- 27 30 32

A??.	K????	e
SK1/2-27SP	1x4	103,00



3 . **3/8" , 61**

- Cr-V
- 5.5 6 7 8 9 10 11 12 13
- 14 15 16 17 18 19 20 21 22 23
- 24

A??.	K????	e
SK3/8-61 SP	1x2	131,00



4 . **1/4"+1/2" , 79**

- Cr-V
- 1/2" 16 17 18 19 20 21 22 23 24 25
- 27 30 32 1/4" 4.0 4.5 5.0 5.5 6.0
- 7.0 8.0 9.0 10

A??.	K????	e
SK1/4-1/2-79SP	1x2	200,00



5 C

- Cr-V

A??.	K????	e
FD-8	2-2.5-3-4-5-5.5-6-8	6x10=60 8,00
FT-8	T9-10-15-20-25-27-30-40	6x10=60 10,00



6

- Cr-V
- 1.5 2 2.5 3 4 5 6 8 10

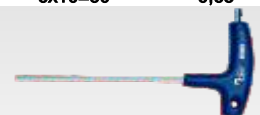
A??.	K????	e
PM-B9	6x10=60	9,00
BM-B9	6x10=60	9,65



7

- Cr-V

A??.				K????	e
PM-1.5B	1.5	14	74	12x60=720	0,40
PM-2B	2	16	80	12x60=720	0,43
PM-2.5B	2.5	18	87	12x60=720	0,49
PM-3B	3	20	96	12x60=720	0,56
PM-4B	4	25	107	12x60=720	0,59
PM-5B	5	28	120	12x30=360	0,83
PM-6B	6	32	136	12x30=360	0,98
PM-8B	8	36	154	12x10=120	1,70
PM-10B	10	40	172	12x10=120	2,80



8 T-

- Cr-V

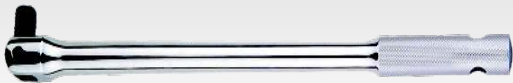
A??.						K????	e
TPS-2C	2	89	147	180	12	10x24=240	2,44
TPS-2.5C	2.5	89	147	180	12	10x24=240	2,56
TPS-3C	3	89	147	180	12	10x24=240	2,64
TPS-4C	4	89	147	180	12	10x12=120	3,74
TPS-5C	5	102	162	180	14	10x12=120	4,17
TPS-6C	6	102	162	180	14	10x12=120	5,03
TPS-8C	8	126	190	180	20	10x6=60	6,65
TPS-10C	10	126	190*	180	20	8x6=48	8,49



1 T 1/2"

• Cr-V

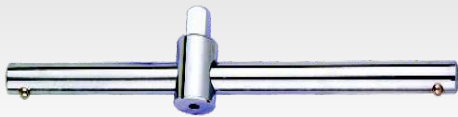
A??N°	K????		e
RTS1/2	1/2"	245	6x6=36 29,58



3 1/2"

• Cr-V
• 180°

A??N°	K????		e
FH1/2-15"	1/2"	375	6x4=24 20,50



5 1/2"

• Cr-V

A??N°	K????		e
SB1/2	1/2"	250	6x10=60 8,00



7 3/8"

• Cr-V

A??N°	K????		e
SK3/8-6	6	28	10x24=240 1,00
SK3/8-7	7	28	10x24=240 1,00
SK3/8-8	8	28	10x24=240 1,00
SK3/8-9	9	28	10x24=240 1,00
SK3/8-10	10	28	10x24=240 1,00
SK3/8-11	11	28	10x24=240 1,00
SK3/8-12	12	28	10x24=240 1,00
SK3/8-13	13	28	10x24=240 1,14
SK3/8-14	14	28	10x24=240 1,23
SK3/8-15	15	28	10x24=240 1,33
SK3/8-16	16	28	10x24=240 1,55
SK3/8-17	17	30	10x24=240 1,55
SK3/8-18	18	30	10x24=240 1,77
SK3/8-19	19	30	10x12=120 2,00
SK3/8-20	20	30	10x12=120 2,56
SK3/8-21	21	30	10x12=120 2,56
SK3/8-22	22	30	10x12=120 2,80



2 1/2"

• Cr-V

A??N°	K????		e
EB1/2-5"	1/2"	125	6x10=60 4,20
EB1/2-10"	1/2"	250	6x10=60 6,95



4 1/2"

• Cr-V

A??N°	K????		e
UJ1/2	1/2"	70	10x12=120 5,90



6 3/8"

• Cr-V

A??N°	K????		e
RTS3/8	3/8"	206	6x10=60 23,67

8 1/4"

• Cr-V

A??N°	K????		e
SK1/4-4	4.0	25	10x24=240 0,60
SK1/4-4.5	4.5	25	10x24=240 0,60
SK1/4-5	5.0	25	10x24=240 0,60
SK1/4-5.5	5.5	25	10x24=240 0,60
SK1/4-6	6.0	25	10x24=240 0,60
SK1/4-7	7.0	25	10x24=240 0,60
SK1/4-8	8.0	25	10x24=240 0,66
SK1/4-9	9.0	25	10x24=240 0,66
SK1/4-10	10.0	25	10x24=240 0,76
SK1/4-11	11.0	25	10x24=240 0,81
SK1/4-12	12.0	25	10x24=240 0,86
SK1/4-13	13.0	25	10x24=240 0,91
SK1/4-14	14.0	25	10x24=240 1,01



9 1/2"

• Cr-V

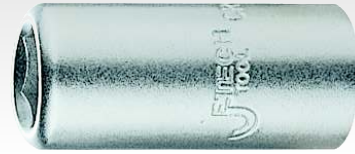
A??N°	K????		e
SK1/2-D10	10	77	10x24=240 3,43
SK1/2-D13	13	77	10x24=240 3,43
SK1/2-D14	14	77	10x24=240 3,43
SK1/2-D16	16	77	10x12=120 3,43
SK1/2-D17	17	77	10x12=120 3,43
SK1/2-D18	18	77	10x12=120 3,50
SK1/2-D19	19	77	10x12=120 3,94
SK1/2-D21	21	77	10x6=60 4,25



1 3/8"

•Cr - V

			K	e
SK3/8-D10	10	63	10x24=240	2,82
SK3/8-D13	13	63	10x24=240	3,00
SK3/8-D17	17	63	10x12=120	3,20
SK3/8-D19	19	63	10x12=120	3,70
SK3/8-D21	21	63	10x6=60	4,60



2 1/4"

e

•Cr-V

A			K	e
AD 1/4	1/4"	25	10x24=240	0,80



3 3/8"

•Cr - V

			K	e
UJ3/8	3/8"	55	10x24=240	4,20



4 3/8"

•Cr-V

A			K	e
EB3/8-6"	3/8"	150	6x20=120	3,25
EB3/8-10"	3/8"	250	6x10=60	5,25



5 T 1/4"

•Cr - V

			K	e
RTS1/4	1/4"	150	6x10=60	19,50



6 3/8"

•Cr-V

A			K	e
SB3/8	3/8"	200	10x12=120	5,20

7 e

•Cr - V



			K	e
AD3/8	3/8"	25	10x12=120	1,90

8 PH,

•S2



A				K	e	/10
PH0-25	PH0	25	6.35	10x100=1200	3,15	
PH1-25	PH1	25	6.35	10x100=1200	3,15	
PH2-25	PH2	25	6.35	10x100=1200	3,15	
PH3-25	PH3	25	6.35	10x100=1200	3,15	

9 Torx,

•S2



				K	e	/10
T10	T10	25	6.35	10x100=1200	3,37	
T15	T15	25	6.35	10x100=1200	3,37	
T20	T20	25	6.35	10x100=1200	3,37	
T25	T25	25	6.35	10x100=1200	3,37	
T27	T27	25	6.35	10x100=1200	3,37	
T30	T30	25	6.35	10x100=1200	3,37	
T40	T40	25	6.35	10x100=1200	3,37	

11 PH,

•S2



				K	e	/10
AR4.5-50#1	PH1	4.5	50	6.35	10x100=1200	7,71
AR4.5-50#2	PH2	4.5	50	6.35	10x100=1200	7,71

10 Hexagon,

•S2



A				K	e	/10
HX-2	2	25	6.35	10x100=1200	3,37	
HX-3	3	25	6.35	10x100=1200	3,37	
HX-4	4	25	6.35	10x100=1200	3,37	
HX-5	5	25	6.35	10x100=1200	3,37	
HX-6	6	25	6.35	10x100=1200	3,37	
HX-7	7	25	6.35	10x100=1200	3,37	
HX-8	8	25	6.35	10x100=1200	3,37	